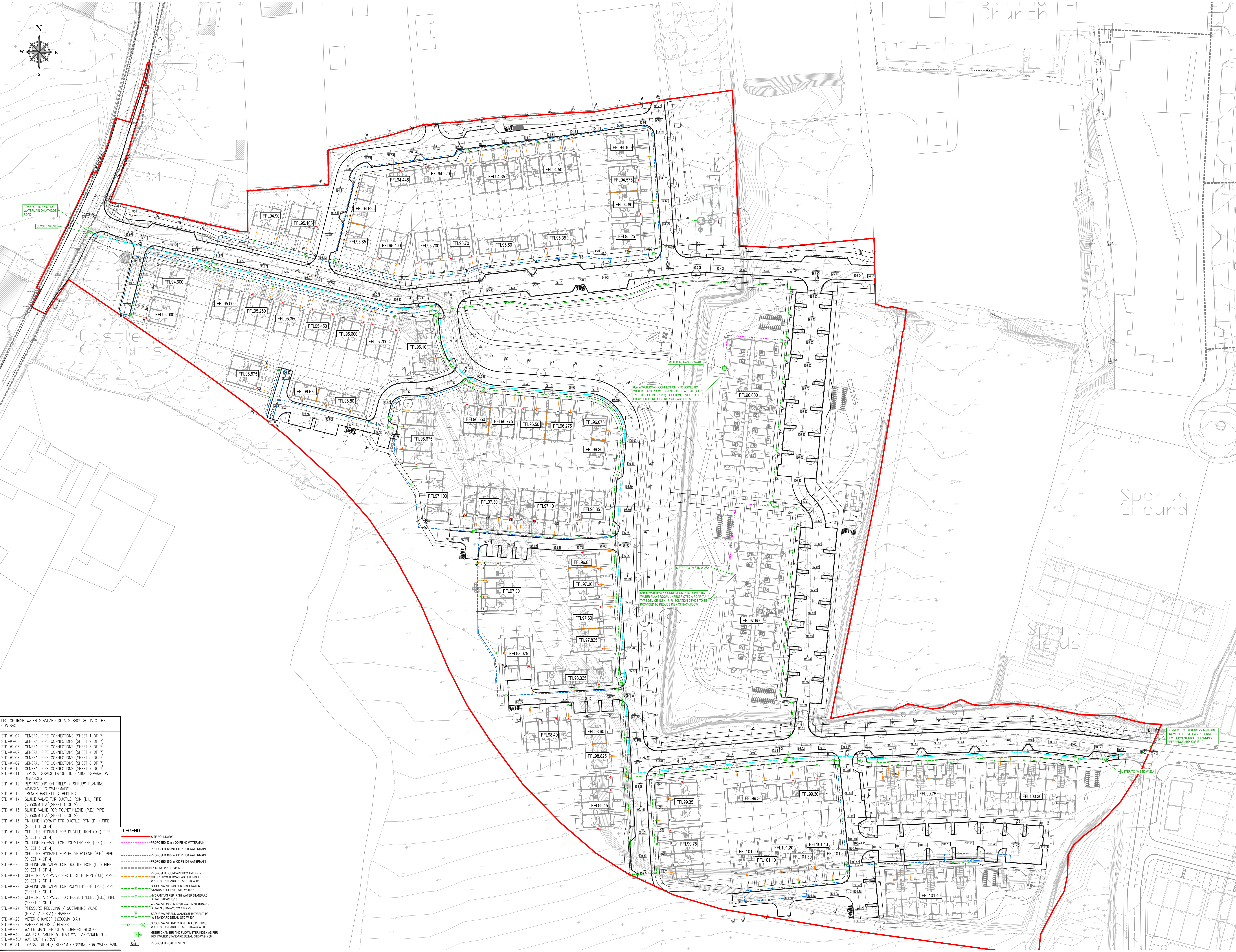


1. ALL DRAWINGS TO BE CHECKED BY CONTRACTOR ON SITE AND ENGINEER INFORMED OF DISCREPANCIES BEFORE WORK COMMENCES.
2. THE CONTRACTOR SHALL VERIFY ALL AS TO THE ACCURACY OF EXISTING ELEVATIONS AND LOCATION OF EXISTING SERVICES ON SITE PRIOR TO COMMENCEMENT OF WORKS ON SITE.
3. ALL DIMENSIONS AND LEVELS ARE IN METERS AND ARE RELATED TO ORDNANCE DATUM. CO-ORDINATES RELATE TO IRISH TRANSVERSE MERCATOR.
4. ALL WATERMANS VALVES AND FITTINGS SHALL BE CONSTRUCTED IN ACCORDANCE WITH THE IRISH WATER STANDARD DETAILS AND IRISH WATER CODE OF PRACTICE FOR WATER INFRASTRUCTURE.
5. ALL WATERMANS SHALL BE HERE, PERIOD, 50017 TO IS EN 12001 PART 2 (2017) AND IS EN 12002 (2017).
6. CONNECTION BETWEEN EXISTING AND PROPOSED WATERMANS TO BE MADE IN ACCORDANCE WITH IRISH WATER STANDARD DETAILS STD-W-03 TO STD-W-16 (IRISH WATER STANDARD DETAILS STD-W-03 TO STD-W-16) AND IN ACCORDANCE WITH THE REQUIREMENTS OF IRISH WATER STANDARD DETAILS STD-W-17 TO STD-W-27.
7. ALL VALVES AND FITTINGS SHALL BE PROVIDED IN ACCORDANCE WITH THE REQUIREMENTS OF IRISH WATER STANDARD DETAILS STD-W-03 TO STD-W-16 (IRISH WATER STANDARD DETAILS STD-W-03 TO STD-W-16) AND IN ACCORDANCE WITH THE REQUIREMENTS OF IRISH WATER STANDARD DETAILS STD-W-17 TO STD-W-27.
8. CONNECTION TO EXISTING WATERMANS TO BE COORDINATED BY THE CONTRACTOR WITH IRISH WATER AND/OR THE LOCAL AUTHORITY.
9. CONTRACTORS TO LIAISE WITH IRISH WATER AND / OR THE LOCAL AUTHORITY AS REQUIRED REGARDING TESTING, CLEANING AND STERILISATION OF WATERMANS.
10. WATERMANS TO BE PRESSURE TESTED IN ACCORDANCE WITH THE REQUIREMENTS OF IRISH WATER AND IS EN 12002 (2017) GUIDE TO TESTING OF PRESSURE PIPES AND FITTINGS FOR USE BY PUBLIC WATER SUPPLIERS, OCTOBER 2005. A FORMAL TEST REPORT SHALL BE SUBMITTED TO THE ENGINEER DETAILING THE TEST RESULTS OF ALL TESTS.
11. ALL VALVES AND FITTINGS SHALL BE PROVIDED IN CONCRETE OR CAST IN PLACE CONCRETE. ALL VALVES AND FITTINGS SHALL BE SURROUNDED BY A CONCRETE PAD 300mm x 300mm x 100mm DEEP FORMED WITH 100mm CONCRETE. ALL VALVES AND FITTINGS SHALL BE SURROUNDED BY A CONCRETE PAD 300mm x 300mm x 100mm DEEP FORMED WITH 100mm CONCRETE. ALL VALVES AND FITTINGS SHALL BE SURROUNDED BY A CONCRETE PAD 300mm x 300mm x 100mm DEEP FORMED WITH 100mm CONCRETE.
12. ALL WATERMANS PIPE MATERIAL TO BE IN COMPLIANCE WITH IRISH WATER CODE OF PRACTICE.



- LIST OF IRISH WATER STANDARD DETAILS BROUGHT INTO THE CONTRACT
- STD-W-04 GENERAL PIPE CONNECTIONS (SHEET 1 OF 7)
 - STD-W-05 GENERAL PIPE CONNECTIONS (SHEET 2 OF 7)
 - STD-W-06 GENERAL PIPE CONNECTIONS (SHEET 3 OF 7)
 - STD-W-07 GENERAL PIPE CONNECTIONS (SHEET 4 OF 7)
 - STD-W-08 GENERAL PIPE CONNECTIONS (SHEET 5 OF 7)
 - STD-W-09 GENERAL PIPE CONNECTIONS (SHEET 6 OF 7)
 - STD-W-10 GENERAL PIPE CONNECTIONS (SHEET 7 OF 7)
 - STD-W-11 TYPICAL SERVICE LAYOUT INDICATING SEPARATION DISTANCES
 - STD-W-12 RESTRICTIONS ON TREES / SHRUBS PLANTING ADJACENT TO WATERMANS
 - STD-W-13 TRENCH BACKFILL & BEDDING
 - STD-W-14 SLUICE VALVE FOR DUCTILE IRON (D.I.) PIPE (<350MM DIA.) (SHEET 1 OF 2)
 - STD-W-15 SLUICE VALVE FOR POLYETHYLENE (P.E.) PIPE (<350MM DIA.) (SHEET 2 OF 2)
 - STD-W-16 ON-LINE HYDRANT FOR DUCTILE IRON (D.I.) PIPE (SHEET 1 OF 4)
 - STD-W-17 OFF-LINE HYDRANT FOR DUCTILE IRON (D.I.) PIPE (SHEET 2 OF 4)
 - STD-W-18 ON-LINE HYDRANT FOR POLYETHYLENE (P.E.) PIPE (SHEET 3 OF 4)
 - STD-W-19 OFF-LINE HYDRANT FOR POLYETHYLENE (P.E.) PIPE (SHEET 4 OF 4)
 - STD-W-20 ON-LINE AIR VALVE FOR DUCTILE IRON (D.I.) PIPE (SHEET 1 OF 4)
 - STD-W-21 OFF-LINE AIR VALVE FOR DUCTILE IRON (D.I.) PIPE (SHEET 2 OF 4)
 - STD-W-22 ON-LINE AIR VALVE FOR POLYETHYLENE (P.E.) PIPE (SHEET 3 OF 4)
 - STD-W-23 OFF-LINE AIR VALVE FOR POLYETHYLENE (P.E.) PIPE (SHEET 4 OF 4)
 - STD-W-24 PRESSURE REDUCING / SUSTAINING VALVE (P.R.V. / P.S.V.) CHAMBER
 - STD-W-25 METER CHAMBER (<300MM DIA.)
 - STD-W-26 METER CHAMBER & FLOW METER W/80KA FOR IRISH WATER STANDARD DETAIL STD-W-30A/B
 - STD-W-27 SCOUR CHAMBER & HEAD WALL ARRANGEMENTS
 - STD-W-28 WASHOUT HYDRANT
 - STD-W-29 TYPICAL DITCH / STREAM CROSSING FOR WATER MAIN

LEGEND

[Red line]	PROPOSED 63mm OD PE100 WATERMAIN
[Blue line]	PROPOSED 125mm OD PE100 WATERMAIN
[Green line]	PROPOSED 160mm OD PE100 WATERMAIN
[Orange line]	PROPOSED 225mm OD PE100 WATERMAIN
[Dashed line]	EXISTING WATERMAIN
[Green circle]	PROPOSED 100mm DIA. AND 25mm OD PE100 WATERMAIN AS PER IRISH WATER STANDARD DETAIL STD-W-03
[Green square]	SLUICE VALVES AS PER IRISH WATER STANDARD DETAILS STD-W-14/15
[Green circle with cross]	HYDRANT AS PER IRISH WATER STANDARD DETAIL STD-W-16/18
[Green circle with cross]	AIR VALVES AS PER IRISH WATER STANDARD DETAIL STD-W-20/21/22/23
[Green circle with cross]	SCOUR VALVE AND WASHOUT HYDRANT TO IRISH WATER STANDARD DETAIL STD-W-24
[Green circle with cross]	SCOUR VALVE AND CHAMBER AS PER IRISH WATER STANDARD DETAIL STD-W-30A/B
[Green circle with cross]	METER CHAMBER AND FLOW METER W/80KA FOR IRISH WATER STANDARD DETAIL STD-W-30A/B
[Green circle with cross]	SCOUR CHAMBER AND HEAD WALL ARRANGEMENTS AS PER IRISH WATER STANDARD DETAIL STD-W-27
[Green circle with cross]	WASHOUT HYDRANT AS PER IRISH WATER STANDARD DETAIL STD-W-28
[Green circle with cross]	TYPICAL DITCH / STREAM CROSSING FOR WATER MAIN AS PER IRISH WATER STANDARD DETAIL STD-W-29
[Red dashed line]	PROPOSED ROAD LEVELS

ORDNANCE SURVEY IRELAND LICENCE
No EN 001921
© ORDNANCE SURVEY IRELAND
GOVERNMENT OF IRELAND

DBFL CONSULTING ENGINEERS
Civil & Structural Engineering

PROJECT: NEWCASTLE SOUTH
PROPOSED WATERMAIN LAYOUT

DATE: 21/02/2021
SCALE: 1:500

CLIENT: CAIRN HOMES PROPERTIES LTD

DESIGNED BY: [Name]
CHECKED BY: [Name]
DATE: 21/02/2021